

# LOTUS

Organic Herbs & Spices





# ABOUT

Lotus, originally founded in 1977, was the first company of SEKEM. The company processes all kinds of Organic herbs and spices from Biodynamical and Organic cultivated plants. The herbs, spices and seeds are produced and distributed to its sister companies ISIS and ATOS, as well as for the export market according to International Demeter Processing Guidelines. Taste, aroma and the natural medicinal effectiveness are the highest priorities.

Lotus is the pioneer of the whole Middle East in providing high quality and a variety of bulk Organic herbs, spices, dehydrated vegetables, cereals and dried legumes. Lotus reflects what kind of products

it sells and in which way it distributes values along the value chain. Hence, Lotus serves humanity by producing Organic products that are considered friendly for human and environment.





# OUR WORK ENVIRONMENT

Lotus monitors and improves the efficiency of water usage and energy consumption. 100% of the Organic wastes of Lotus products have been recycled in compost. This approach helps keeping the environment clean and safe for the next generations. The provision of a safe environment and access to health services are some of the main requirements for the workplace. Lotus differentiate between two levels of action: First, health and safety at the workplace, and, second, a broader approach towards health promotion in the community. In all organizational processes Lotus takes health and safety aspects into account. To followup on, for example, any reported safety problems or accumulations of incidents, a precise documentation is needed. The company sets tangible targets and trainings on all relevant health and safety issues regularly. Lotus offers its employees training courses regularly, a lucrative salary, rewards for best worker and a huge range of cultural courses.





## HOW WE WORK

We are used working with our partners on a long-term basis. As we are very committed to our farmers, we only grow according to our partners' contracts/plans. This means that we need to know the demand in advance before the growing season starts. Sometimes we have extra quantities in stock, but this varies from item to item and can change weekly. For some products we can increase cultivation during the season or involve our contract farmers and see if they still have capacity or quantities available.

### Annual Forecast

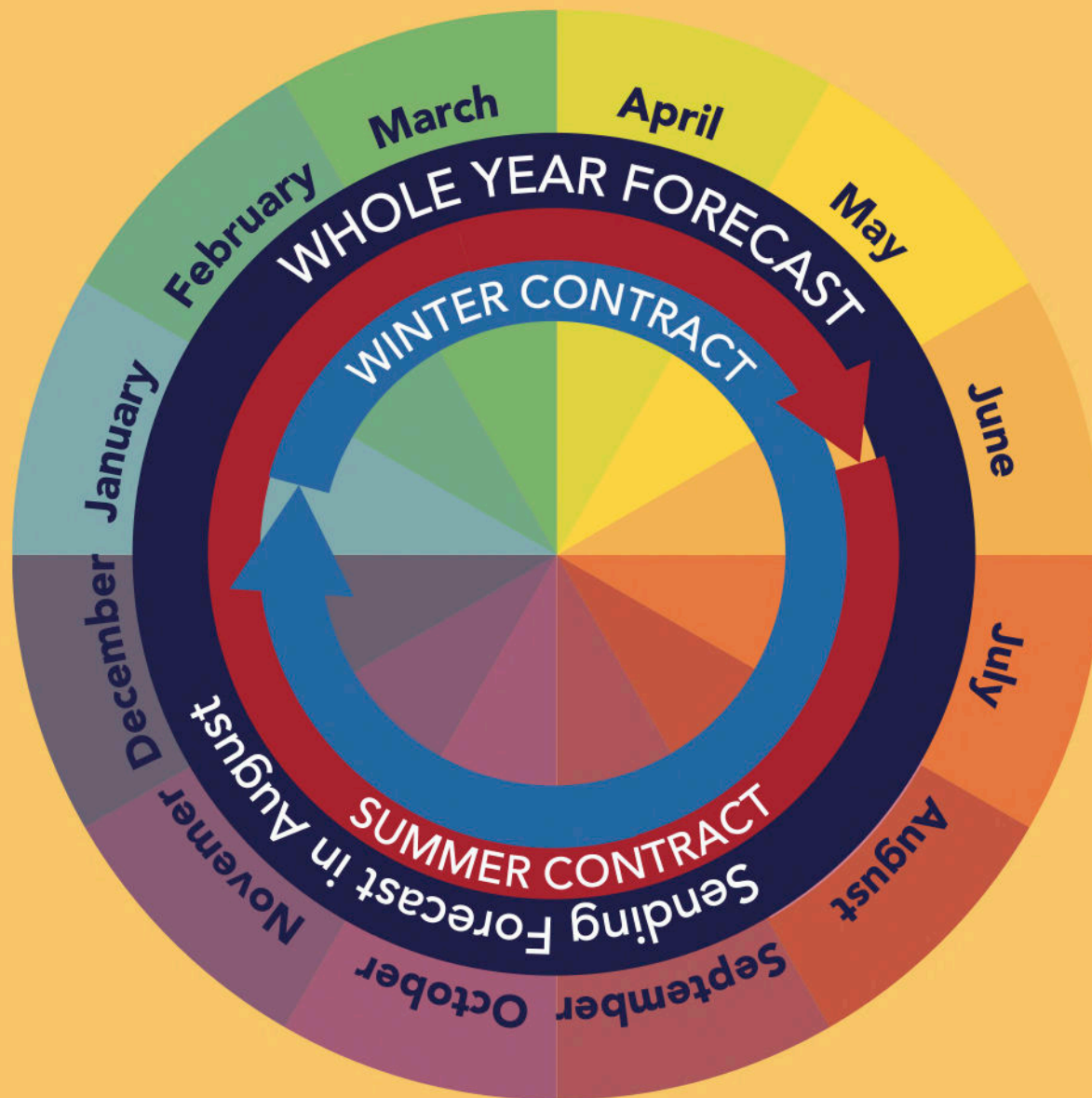
Each year in the beginning of August we are requesting an annual forecast from our partners. This is necessary as we have to plan with our agriculture team where we will cultivate your products and how much.

This forecast has to cover the winter- & the summer season.

### Contracts

As no farmer in the world would agree on prices more than one year ahead, we are giving our partners price indication with a variation of +/- 10%. During the harvest of the items we are fixing the prices twice per year. The winter contract starts in January and lasts one year. The summer contract starts in June and lasts one year.







## **1 Quarantine**

Arrival of raw material,  
analysis in third party  
laboratory

## **2 CO2 Fumigation**

getting rid of small insects  
and laves before entering  
the storage

## **3 Storage**

Storing the certified and  
treated goods until it is  
ready for cleaning

## **4 Seed Processing Line**

Cleaning the Seeds from all  
foreign material

## **5 Leaf Processing Line**

Cleaning the Herbs from all  
foreign material

## **6 Special Cuts**

Here the herbs and seeds are  
processed into powder or  
special requests

## **7 CO2 Fumigation**

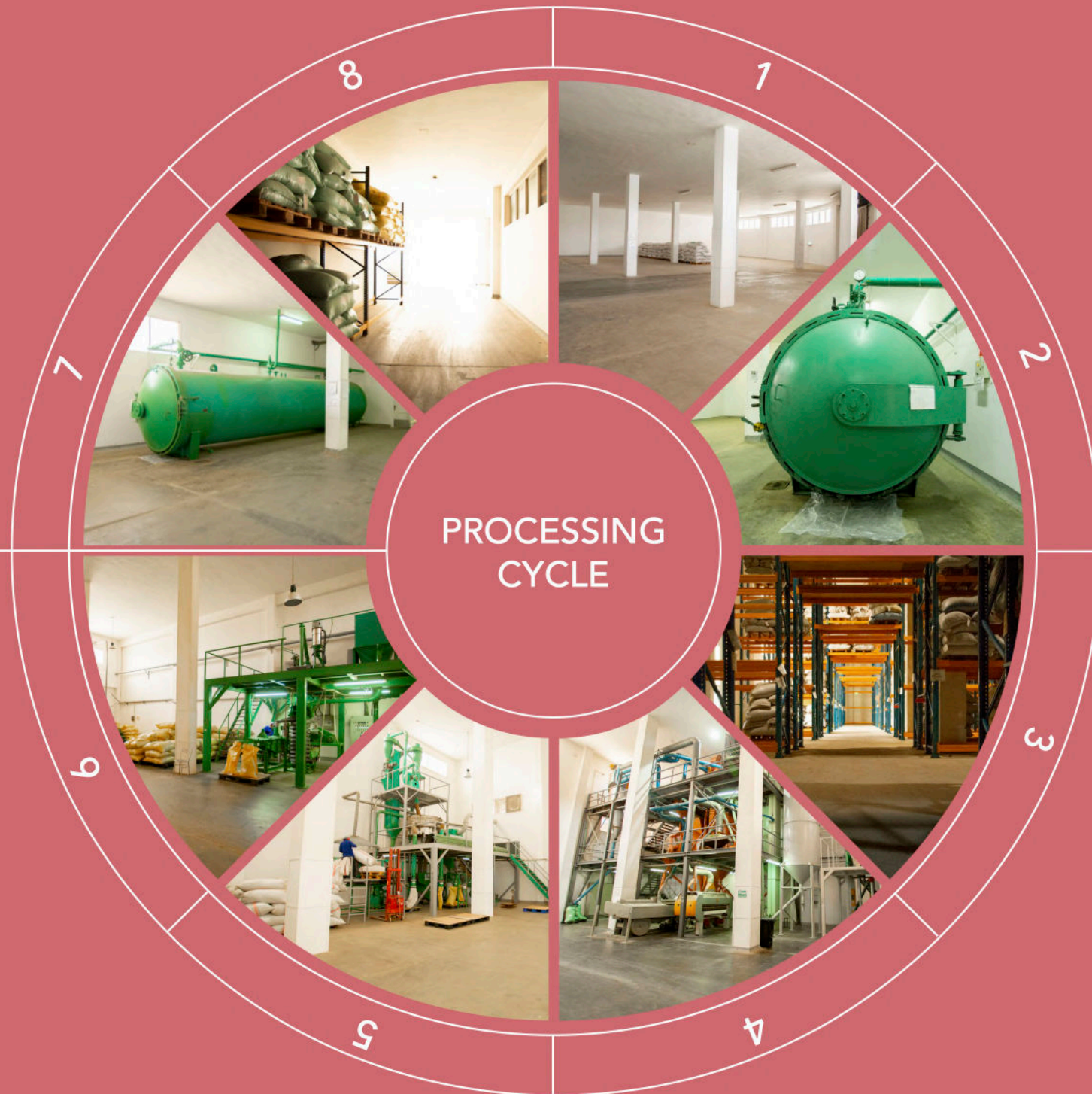
Reducing the risk of insects  
before loading the container

## **8 Loading Ramp**

Loading the container to  
distribute our goods to our  
sister company ISIS and into  
the world















### **Peppermint**

#### **Cut Sizes**

*Broken (3-6mm)*

*TBC (0.5-2mm)*

**Cultivation:** Mar

**Harvest:** Mar - Nov



### **Spearmint**

#### **Cut Sizes**

*Broken (3-6mm)*

*TBC (0.5-2mm)*

**Cultivation:** Mar

**Harvest:** Mar - Oct



### **Marjoram**

#### **Cut Sizes**

*2 - 4 mm*

*TBC (0.5-2mm)*

**Cultivation:** Nov

**Harvest:** Mar, Jun, Oct



### **Thyme**

#### **Cut Sizes**

*Broken (3-6mm)*

*TBC (0.5-2mm)*

**Cultivation:** Mar

**Harvest:** Mar - Nov



### **Sage**

#### **Cut Sizes**

*Leaves*

**Cultivation:**

**Harvest:** Mar - Jun



### **Savory**

#### **Cut Sizes**

*Broken (3-6mm)*

*TBC (0.5-2mm)*

**Cultivation:** Mar

**Harvest:** Mar - Oct



### **Moringa**

#### **Cut Sizes**

*TBC (0.5-2mm)*

*Powder*

**Cultivation:** May

**Harvest:** Aug - Oct



### **Basil**

#### **Cut Sizes**

*Broken (3- 6 mm)*

*TBC (0.5 - 2 mm),*

*Powder*

**Cultivation:** Mar

**Harvest:** Jun - Oct









### **Lemongrass**

#### **Cut Sizes**

6 - 8 mm

TBC (0.5-2mm)

**Cultivation:** Apr

**Harvest:** Mar - Oct



### **Chamomile**

#### **Cut Sizes**

*Flower*

TBC (0.5-2mm)

**Cultivation:** Oct

**Harvest:** Feb - Mar



### **Hibiscus Red**

#### **Cut Sizes**

*Petals*

Broken (3 - 6 mm)

TBC (0.5 - 2 mm), Powder

**Cultivation:** May

**Harvest:** Nov



### **Hibiscus White**

#### **Cut Sizes**

*Petals*

Broken (3 - 6 mm)

TBC (0.5 - 2 mm), Powder

**Cultivation:** May

**Harvest:** Nov



### **Calendula**

#### **Cut Sizes**

*Flower*

*Petals*

**Cultivation:** Oct

**Harvest:** Jan - Apr



### **Henna**

#### **Cut Sizes**

*Powder*

**Cultivation:** n.a

**Harvest:** Aug - Nov



### **Lime**

#### **Cut Sizes**

*Slices*

TBC (0.5 - 2 mm)

**Cultivation:** Feb

**Harvest:** Jul - Dec



### **Licorice**

#### **Cut Sizes**

Broken (3 - 6 mm)

10cm, 14cm,

TBC (0.5 - 2 mm), 2mm,

*Powder*

**Cultivation:** Feb

**Harvest:** Feb - Apr





### **Ginger**

Cut Sizes  
*Pieces*

Cultivation: *Feb*  
Harvest: *May - Oct*



### **Anise Seed**

Cut Sizes  
*Whole*  
*Powder*

Cultivation: *Oct*  
Harvest: *Apr*



### **Caraway Seed**

Cut Sizes  
*Whole*

Cultivation: *Oct*  
Harvest: *May*



### **Fennel Seed**

Cut Sizes  
*Whole*  
*2mm, Powder*

Cultivation: *Oct*  
Harvest: *Jun*



### **Fenugreek Seed**

Cut Sizes  
*Whole*  
*Powder*

Cultivation: *Oct*  
Harvest: *May*



### **Coriander Seed**

Cut Sizes  
*Whole*

Cultivation: *Oct*  
Harvest: *May*



### **Nigella Seed**

Cut Sizes  
*Whole*

Cultivation: *Oct*  
Harvest: *May*



### **Sesame Seed**

Cut Sizes  
*Whole*

Cultivation: *Apr*  
Harvest: *Aug*













### **Linnen Seed**

Cut Sizes  
*Whole*

Cultivation: *Mar*  
Harvest: *Mar - Oct*



### **Brown Lentil**

Cut Sizes  
*Whole*

Cultivation: *Nov*  
Harvest: *Mar - Apr*



### **Red Lentil**

Cut Sizes  
*Whole*

Cultivation: *Nov*  
Harvest: *Apr - May*



### **Chickpeas**

Cut Sizes  
*Whole*

Cultivation: *Nov*  
Harvest: *Apr - May*



### **Fava Beans**

Cut Sizes  
*Whole*

Cultivation: *Oct*  
Harvest: *Apr - May*



### **White Beans**

Cut Sizes  
*Whole*

Cultivation: *Feb*  
Harvest: *May - Jul*



### **Jojoba**

Cut Sizes  
*Whole*

Cultivation: *Mar*  
Harvest: *Jul - Oct*



### **Onion**

#### **Cut Sizes**

*Granulate 1mm  
Powder, Pieces*

**Cultivation:** *Oct*  
**Harvest:** *Apr*



### **Garlic**

#### **Cut Sizes**

*Granulate 1mm  
Powder, Whole*

**Cultivation:** *Oct*  
**Harvest:** *Mar*

## **WE ARE ALSO OFFERING**

*\*Different Cut Sizes upon request*

*Cultivation Project/Trials*







ORGANIC  
**COTTON THREADS**  
FOR TEA BAGS

NATURE  TEX

Contact Person:

Khaled Elmaghawry

Email: [khaled.elmaghawry@sekem.com](mailto:khaled.elmaghawry@sekem.com)



**SEKEM**













# SEED MULTIPLICATIONS

Where we have experience with

## BOTANICAL NAME

## ENGLISH NAME

|   |                   |
|---|-------------------|
| <i>Allium ampeloprasum</i> var. <i>porrum</i> | Leek              |
| <i>Allium cepa</i> var. <i>cepa</i>           | Onion             |
| <i>Althaea rosea</i>                          | Common Hollyhock  |
| <i>Amaranthus blitum</i>                      | Amaranth          |
| <i>Ammi majus</i>                             | Greater ammi      |
| <i>Ammi visnaga</i>                           | Khella            |
| <i>Anethum graveolens</i>                     | Dill              |
| <i>Apium graveolens</i> var. <i>dulce</i>     | Celery            |
| <i>Apium graveolens</i> var. <i>secalinum</i> | Celery            |
| <i>Artemesia absinthium</i>                   | Common wormwood   |
| <i>Artemesia annua</i>                        | Artemesia         |
| <i>Asparagus officinalis</i>                  | Asparagus         |
| <i>Borago officinalis</i>                     | Borage            |
| <i>Brassica carinata</i>                      | Cramb             |
| <i>Brassica juncea</i>                        | Sarepta Mustard   |
| <i>Brassica napus</i>                         | Rapeseed "canola" |
| <i>Brassica nigra</i>                         | Black mustard     |
| <i>Brassica oleracea</i> var. <i>botrytis</i> | Cauliflower       |
| <i>Brassica oleracea</i> var. <i>italica</i>  | Broccoli          |
| <i>Calendula officinalis</i>                  | Calendula         |
| <i>Camelina sativa</i>                        | Camelina          |
| <i>Carthamus tinctorius</i>                   | Safflower         |

*Carum carvi*  
*Chenopodium quinoa*  
*Cichorium intybus* var. *foliosum*  
*Coriandrum sativum*  
*Cymbopogon flexuosus*  
*Cynara cardunculus*  
*Cynara scolymus*  
*Daucus carota* ssp. *sativus*  
*Delphinium ajacis*  
*Digitalis lanata*  
*Dracocephalum moldavica*  
*Echinacea purpurea*  
*Echium vulgare*  
*Eruca sativa*  
*Eruca sativa*  
*Foeniculum vulgare*  
*Foeniculum vulgare* var. *Azoricum*  
*Helianthus annuus*  
*Hibiscus sabdariffa*  
*Hyptis spicigera*  
*Hyssopus seravschanicus*  
*Iberis amara*  
*Lallemantia iberica*  
*Leonurus cardiaca*  
*Linum usitatissimum*  
*Luffa aegyptiaca*  
*Lupinus albus*  
*Marrubium vulgare*  
*Matricaria recutita*  
*Matricaria recutita* var. *bodgold*  
*Matricaria recutita* var. *bona*

Caraway  
 Quinoa  
 Chicory  
 Coriander  
 East Indian lemon grass  
 Wild Artichoke  
 Globe Artichoke  
 Carrot  
 Delphinium  
 Digitalis  
 Moldavian dragonhead  
 Echinacea  
 Echium  
 Roman rocket  
 German r. rocket  
 Fennel  
 Florence Fennel  
 Sunflower  
 Roselle  
 Sesame  
 Hyssop  
 Candytuft  
 Dragon's head  
 Motherwort  
 Flax  
 Luffa  
 Lupin  
 Marrubium  
 Chamomile  
 Chamomile  
 Chamomile

Momordica charantia  
Monarda citriodora  
Monarda fistulosa  
Moringa oleifera  
Nigella sativa  
Ocimum americanum  
Ocimum basilicum  
Ocimum basilicum "Genovese"  
Ocimum basilicum "Red Rubin"  
Ocimum citriodorum  
Ocimum tenuiflorum  
Oenothera biennis  
Origanum majorana  
Origanum syriacum  
Origanum vulgare  
Petroselinum crispum  
Phacelia tanacetifolia  
Pimpinella anisum  
Plantago asiatica  
Plantago ovata  
Prunella vulgaris  
Raphanus sativus  
Raphanus sativus var. Oleiferus  
Rosmarinus officinalis  
Ruta graveolens  
Salvia hispanica  
Salvia officinalis  
Sanguisorba minor  
Senna alexandrina  
Silybum marianum

Bitter melon  
Lemon Bergamot  
Wild Bergamot  
Moringa  
Black seed  
Hairy Basil  
Basil  
Basil  
Red Basil  
Lemon Basil  
Tulsi Basil  
Oenothera  
Majoram  
Oregano  
Oregano  
Parsley  
Lady Phacelia  
Anise  
Plantain  
Psyllium  
Self-Heal  
Radish  
Oil Radish  
Rosemary  
Ruta  
Chia  
Sage  
Pimpinelle  
Senna  
Slovakian Silybum

Sinapis alba  
Stevia rebaudiana  
Tagetes erecta  
Tagetes lucida  
Tanacetum balsamita  
Taraxacum officinale  
Thymus vulgaris  
Trigonella foenumgraecum  
Verbascum thapsus  
Vitex agnus-castus  
Centaurea cyanus  
Godetia grandiflora

White Mustard  
Stevia  
Marygold  
Mexican marygold  
Costmary  
Dandelon  
Thyme  
Fenugreek  
Common Mullein  
Vitex  
cornflower  
Godetia

**WE ARE ALSO OFFERING**  
*Multiplication Projects/Trials*  
*Research Projects\**

*\*Cultivating varieties under  
egyptian conditions*







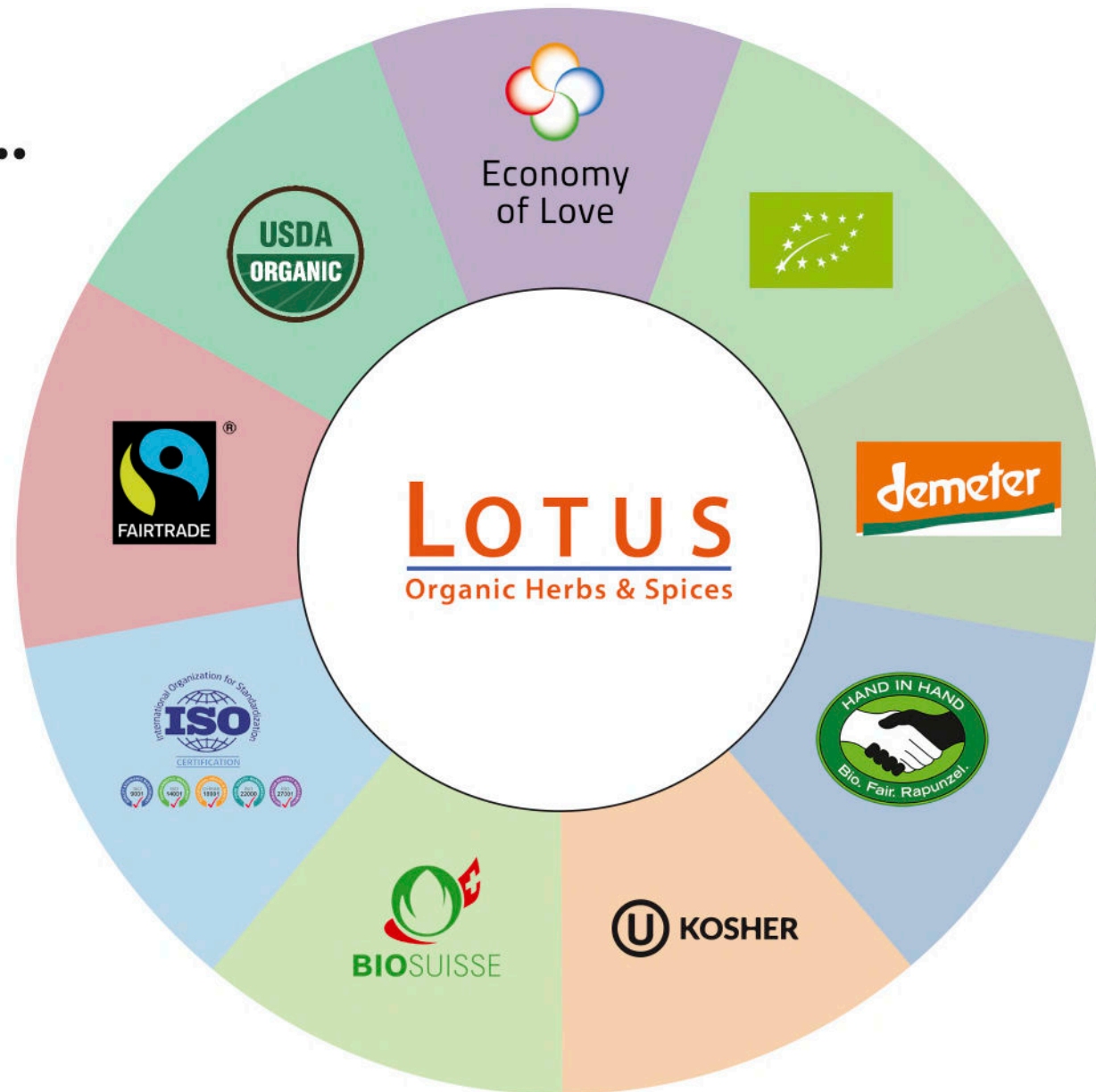
[illegible]



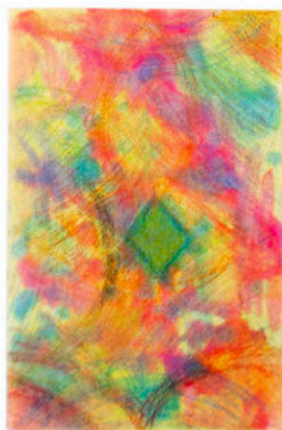




**WE ARE  
CERTIFIED...**







Paintings from the Core Programm

10%

Of our working time is dedicated to art and self development to promote wellbeing and happiness at work (Core Programm).

10%

Of our annual profits are dedicated to cultural activities and potential unfolding

100%

Of our products are ORGANIC Certified

100%

Of our employees are health insured

98%

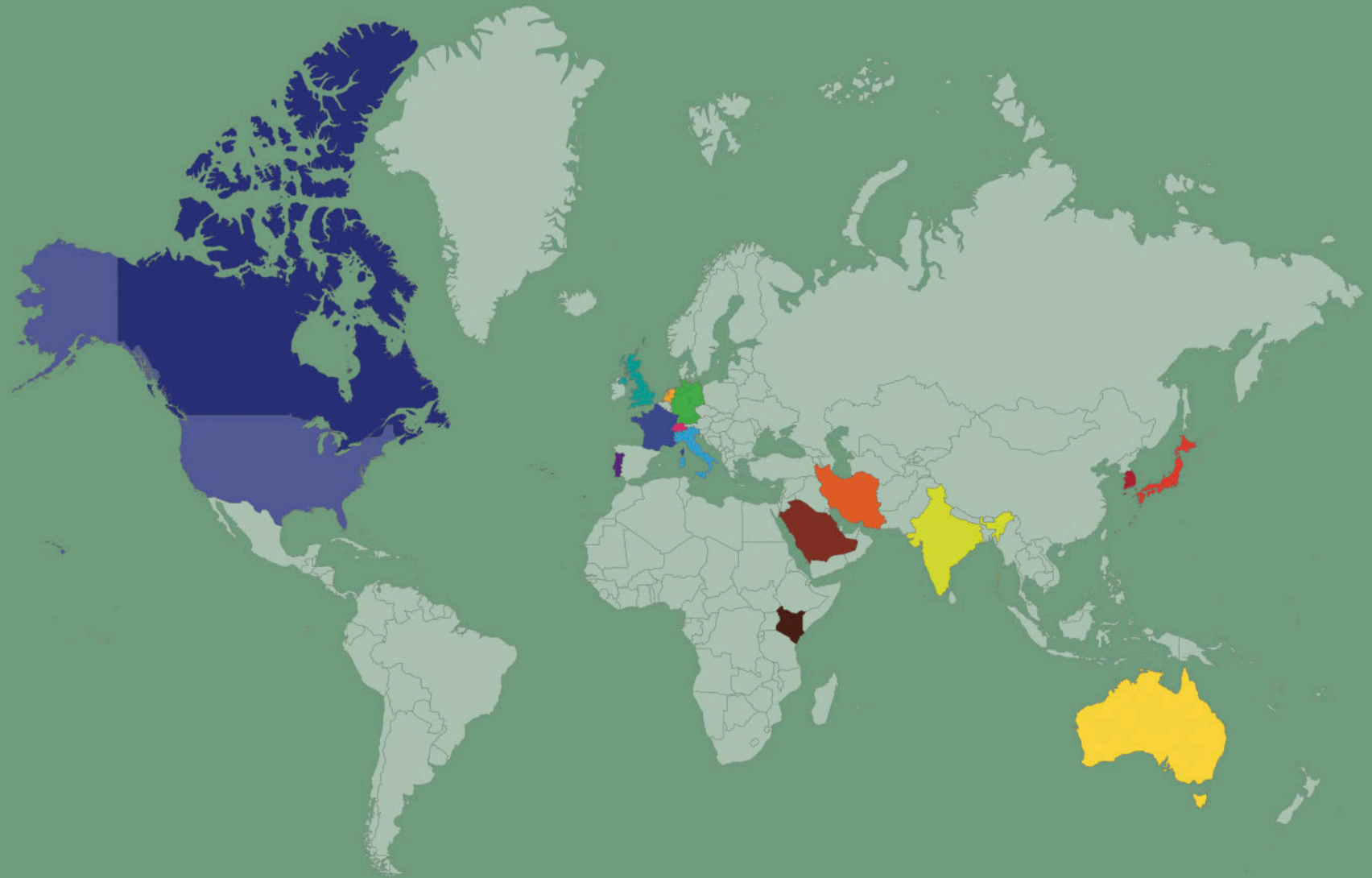
Of our waste is being recycled

98%

Of our products are DEMETER Certified

# EXPORT

Where you will  
find our products





# CONTACT

## Head Office

LOTUS FOR ORGANIC PRODUCTS

3, Belbes Desert Road,  
P.O.B 2834 El Horreya,  
Heliopolis, Cairo - EGYPT

Tel.: +202 265 881 24

Fax.: +202 265 881 23

## General Manager

Email: [christoph.floride@sekem.com](mailto:christoph.floride@sekem.com)

## Sales/Export

Email: [mohamed.elbadawy@sekem.com](mailto:mohamed.elbadawy@sekem.com)

Email: [samuel.knaus@sekem.com](mailto:samuel.knaus@sekem.com)

## Quality

Email: [boshra.elwan@sekem.com](mailto:boshra.elwan@sekem.com)

## Factory Adress:

LOTUS FOR ORGANIC PRODUCTS

Al Kotaybah, Bilbeis, Ash Sharqia  
Governorate 7052013

Location: [30.414795, 31.636167](#)

